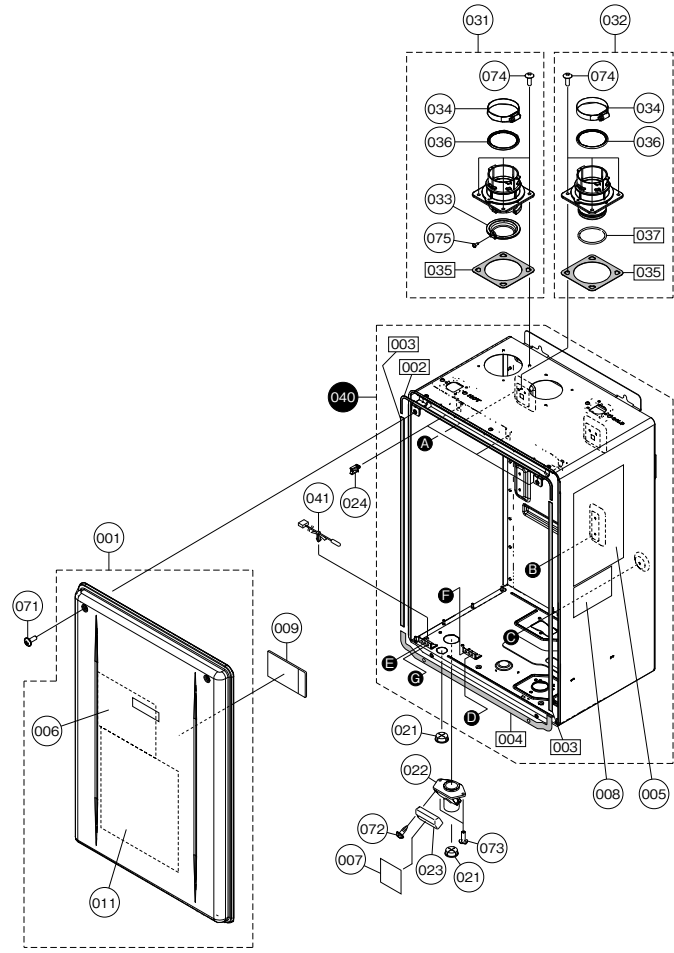


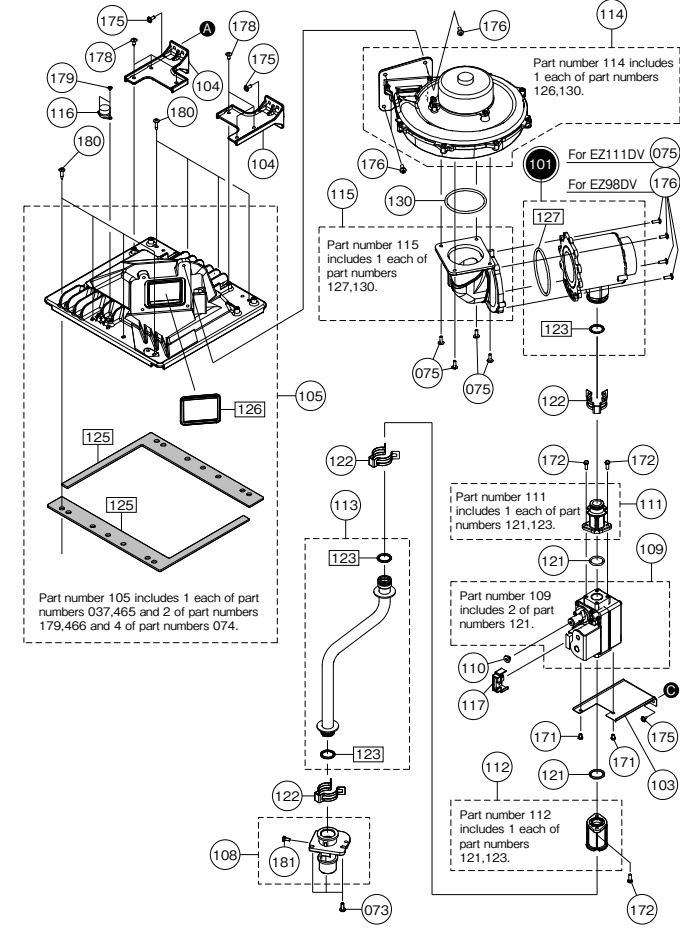
External outfitting EZ111DV(GQ-C3259WX-FF US)  
EZ98DV(GQ-C2859WX-FF US)



External outfitting EZ111DV(GQ-C3259WX-FF US)  
EZ98DV(GQ-C2859WX-FF US)

Part Nos.	Part Names	Order Nos.	Q'ty/unit
001	Front Cover - GQ-C2859WX-FF US / GQ-C3259WX(Z)-FF US	SKJ71UW	1
002	Gasket - Front Cover Top	FABL011	1
003	Gasket - Front Cover Sides	CVAL004	2
004	Gasket - Front Cover Top and Bottom	AALP015	1
005	Label - Outside Front Cover Caution Label	ELVK003	1
006	Label - Inside Front Cover Caution Label	ELVK006	1
007	Label - Remote Terminal Caution Label	ENJK002	1
008	Label - Name Plate DV/OD	FABK010	1
009	Parts List/Technical sheet	FABK051	1
011	Wiring Diagram	FABK002	1
021	Wire Grommet - Rubber	CXPA026	2
022	External Remote Terminal Block	DNSA026	1
023	Cover - External Remote Terminal Block	DNSA025	1
024	Wire Clamp	7559402	3
031	Intake Flue w/ O-Ring and Gasket (SET)	SKJ71W1	1
032	Exhaust Flue w/ O-Ring and Gasket (SET)	SKJ71W2	1
033	Filter - Intake Air	FABF101	1
034	Clamp - Exhaust Pipe	FABF108	2
035	Gasket - Exhaust Flue	FABL101	2
036	O-Ring - Exhaust Pipe	FABL102	2
037	O-Ring - Exhaust Flue	FABL103	1
040	Case - GQ-C32(28)59WX-FF US	SKJ71XS	1
041	Thermistor - Air	BWCH003	1
071	Screw - Front Cover with washer M4X12 S410		
072	Screw - Remote Terminal Cover M4X12 S410		
073	Screw - Long Machine M4X12 S410		
074	Screw - Pre-Coated Machined M4X12 S410		
075	Screw - Long Mounting Machine M4X10 S430		

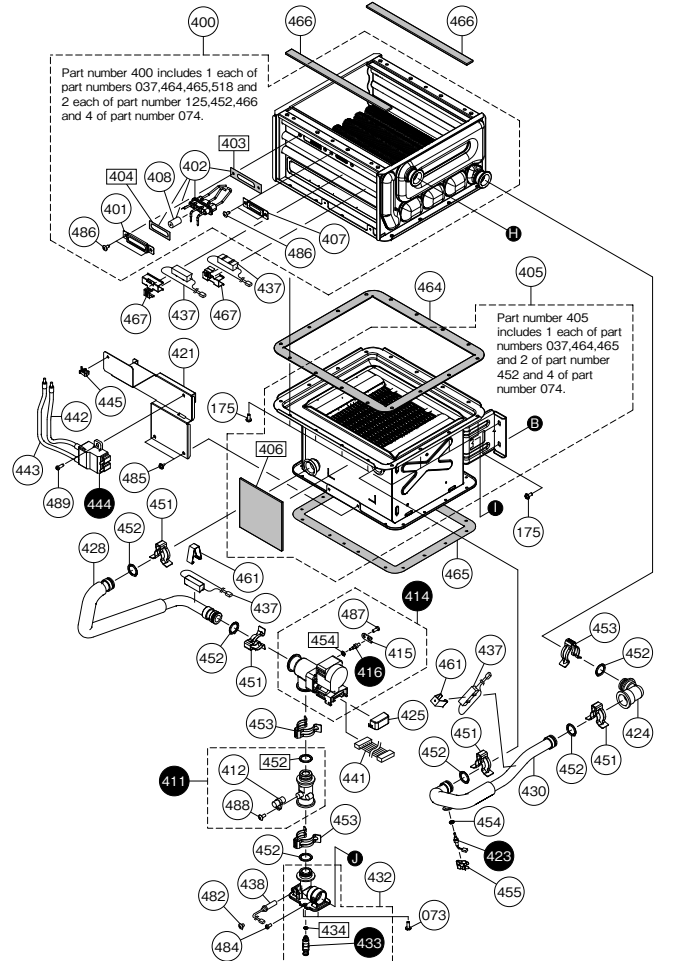
Combustion unit and gas route EZ111DV(GQ-C3259WX-FF US)  
EZ98DV(GQ-C2859WX-FF US)



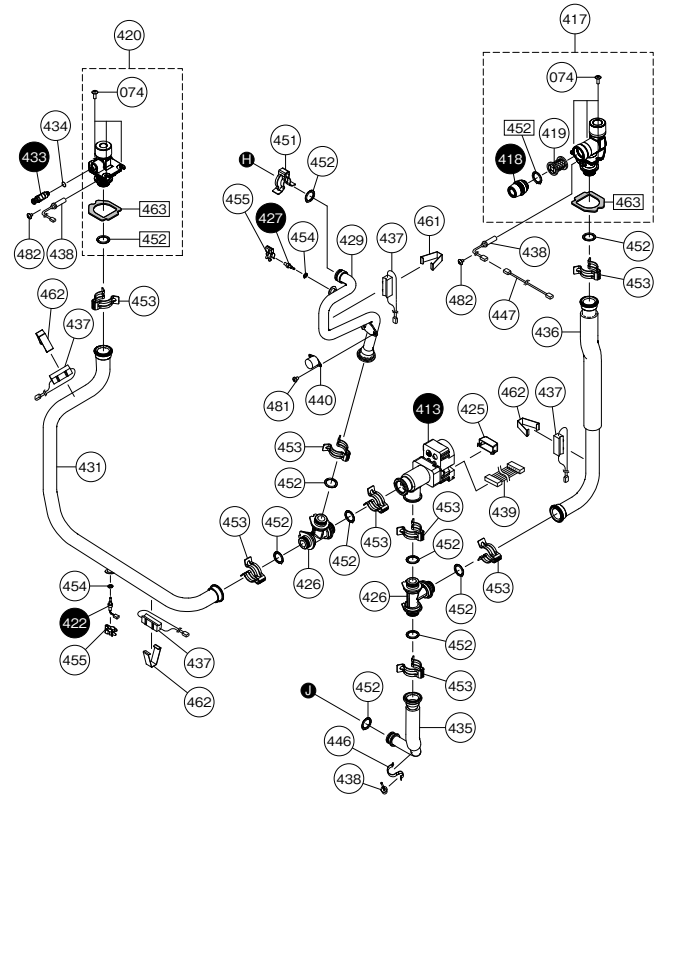
Combustion unit and gas route EZ111DV(GQ-C3259WX-FF US)  
EZ98DV(GQ-C2859WX-FF US)

Part Nos.	Part Names	Order Nos.	Q'ty/unit
101	Venturi 199kbtuh - LP (SET)	SKJ71W3	1<EZ111DV LP>
	Venturi 199kbtuh - NG (SET)	SKJ71W4	1<EZ111DV NG>
	Venturi 180kbtuh - LP (SET)	SKJ71W5	1<EZ98DV LP>
	Venturi 180kbtuh - NG (SET)	SKJ71W6	1<EZ98DV NG>
103	Mounting Plate - Gas Valve	FABA101	1
104	Mounting Plate - Chamber	FABC031	2
105	Burner Chamber (SET)	SKJ71W7	1
106	Inlet Gas Connection w/ Screw (SET)	ELVE021	1
109	Gas Valve (SET)	SKJ71W8	1
110	Cover - Offset Adjustment	FABE011	1
111	Gas Valve Outlet Connector (SET)	SKJ71UW	1
112	Gas Valve Inlet Connector (SET)	SKJ71VX	1
113	Gas Pipe (SET)	SKJ71VY	1
114	Fan Motor w/ Housing	SKJ71W9	1
115	Gas Elbow Connector 199kbtuh (SET)	SKJ71WA	1<EZ111DV>
	Gas Elbow Connector 180kbtuh (SET)	SKJ71WB	1<EZ98DV>
116	High Limit Switch - 320	FABH002	1
117	Cover - Gas Valve Connector	FABJ032	1
121	O-Ring - P20	2192004	2
122	C-Clamp - 16B	6340407	3
123	O-Ring - P18	2110903	3
125	Gasket - Burner	FABL002	2
126	Gasket - Chamber Inlet	FABL003	1
127	O-Ring - Venturi φ71	FABL016	1<EZ111DV>
	O-Ring - Venturi φ60	FABL017	1<EZ98DV>
130	O-Ring - Venturi φ60	FABL017	1
171	Screw - Short Mounting Machine M4X6 S430		
172	Screw - Long Mounting Machine with Spring Washer M4X12 S430		
175	Screw - Medium Machine 4X10 S410		
176	Screw - Mounting Machine M5X12 S430		
178	Screw - Medium Machine M4X10 S410 for Aluminum		
179	Screw - Short Machine M3X5 S410 for Aluminum		
180	Screw - Truss Head Self Drilling Tapping M4X18 S410		
181	Screw - Inlet and Manifold Gas M4X8	SAC6082	1

Hot-water feed route 1 EZ111DV(GQ-C3259WX-FF US)  
EZ98DV(GQ-C2859WX-FF US)



Hot-water feed route 2 EZ111DV(GQ-C3259WX-FF US)  
EZ98DV(GQ-C2859WX-FF US)



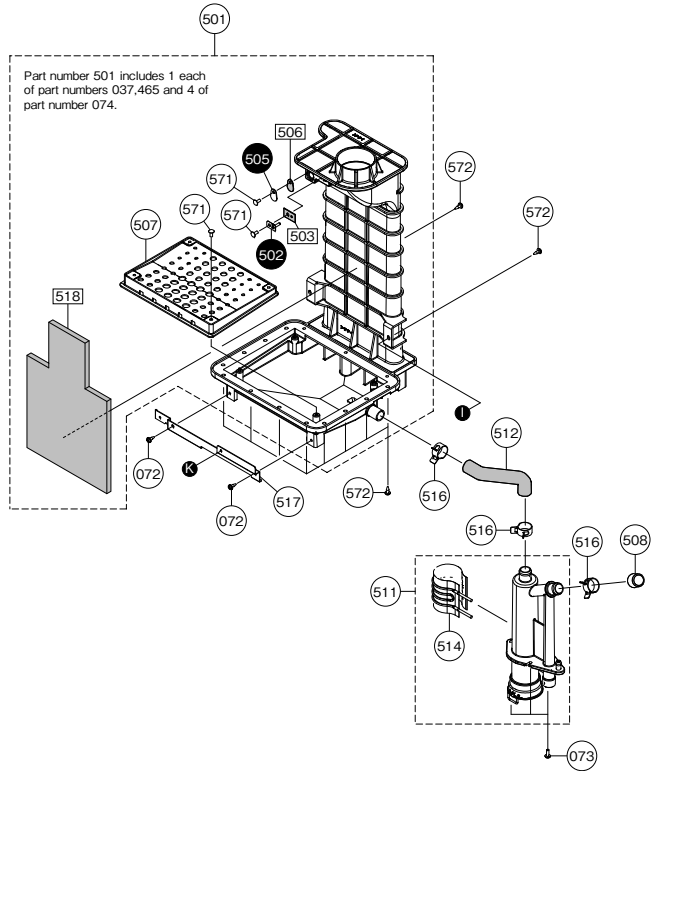
Hot-water feed route EZ111DV(GQ-C3259WX-FF US)  
EZ98DV(GQ-C2859WX-FF US)

Part Nos.	Part Names	Order Nos.	Q'ty/unit
400	Heat Exchanger Kit Primary SS (SET)	SKJ71W3	1
401	Mounting Plate - Ignition Plug	FABD045	1
402	Ignition Plug w/ Gasket	SKJ71VZ	1
403	Gasket - Ignition Plug (HEX)	FABL008	1
404	Gasket - Ignition Plug (Mounting Plate)	FABL010	1
405	Heat Exchanger Kit - Secondary SS (SET)	SKJ71W4	1
406	Gasket - Secondary SS (Front)	FABL015	1
407	Burner Window (SET)	FABD042	1
408	Plug Cover	FABL019	1
411	Water Flow Sensor (SET)	EPAD001	1
412	Magnetic Sensor - Flow Sensor	BWCD093	1
413	Water Servo - Bypass (SET)	ETFD050	1
414	Water Servo - Main (SET)	ETFD051	1
415	Thermistor Holding Plate	ALSD088	1
416	Thermistor - White - O64	BWCD098	1
417	Inlet Water Connection (SET)	SKJ71WP	1
418	Water Filter Cap	DTJD006	1
419	Water Filter	EG80032	1
420	Outlet Water Connection (SET)	SKJ71WQ	1
421	Mounting Plate - Igniter	FABA015	1
422	Thermistor - White - M64	BWCD096	1
423	Thermistor - White - O63	BWCD097	1
424	Water Connector - Elbow	DVTD002	1
425	Wire Cover - Servo	ESTD023	2
426	T-Elbow	ENSD042	2
427	Thermistor - White	EXDD100	1
428	Pipe - Water Servo - Main to Secondary SS HEX	FABD103	1
429	Pipe - Primary SS HEX to T-Elbow	FABD109	1
430	Pipe - Secondary SS HEX to Primary SS HEX	FABD115	1
431	Pipe - T-Elbow to Outlet Water Connection	FABD117	1
432	Drain Connection	FABD121	1
433	Drain Cock	CRUD003	2
434	O-Ring - High Temp P3	SAD6633	2
435	Pipe - T-Elbow to Drain Connection	FABD123	1
436	Pipe - Inlet Water Connection to T-Elbow	FABD136	1
437	Freeze Prevention Heater - Rectangle	ERD002	8
438	Freeze Prevention Heater - Round Short	ERD003	4
439	Wiring Harness - Bypass Water Servo	ETFJ033	1
440	High Limit Switch - 194	FABH001	1
441	Wiring Harness - Main Water Servo	JBD024	1
442	High Voltage Igniter Wire L175	ALSJ078	1
443	High Voltage Igniter Wire L220	ALSJ084	1
444	Igniter	FABJ100	1
445	Wire Clamp	SAE6367	1
446	Clamp - Freeze Prevention	ETHH003	1
447	Extension cable - Freeze Prevention heater	FABJ030	1
451	C-Clamp - Water Pipe 16-25	SAD6593	5
452	O-Ring - High Temp P16	3223302	18
453	C-Clamp - Water Pipe 16A	6340300	11
454	O-Ring - Thermistor High Temp P4	1323709	4
455	C-Clamp - Thermistor	CRUD055	3
461	Clamp - Freeze Prevention	AMML001	3
462	Clamp - Freeze Prevention	ELVL011	3
463	Gasket - Water Connection	EXSL004	2
464	Gasket - Secondary Heat Exchanger	FABL004	1
465	Gasket - Exhaust Duct	FABL005	1
466	Gasket - Primary Heat Exchanger	FABL013	2
467	Clamp - Freeze Prevention	FABL021	2

Hot-water feed route EZ111DV(GQ-C3259WX-FF US)  
EZ98DV(GQ-C2859WX-FF US)

Part Nos.	Part Names	Order Nos.	Q'ty/unit
441	Screw - Small Tapping w/o collar M4X8 S410		
442	Screw - Short Machine M4X6 S410		
444	Screw - Black Sat M4X8 S430		
445	Screw - Short Tapping M4X8 S410		
446	Screw - Medium Machine M4X10 PS550		
447	Screw - Round Head Medium Tapping M4X10 S410		
448	Screw - Round Head Medium Tapping M4X10 S305		
449	Screw - Long Mounting Machine M4X12 S430		

Condensate feed route EZ111DV(GQ-C3259WX-FF US)  
EZ98DV(GQ-C2859WX-FF US)

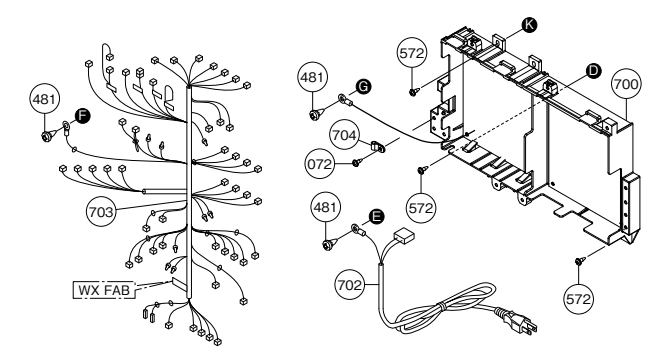


Condensate feed route EZ111DV(GQ-C3259WX-FF US)  
EZ98DV(GQ-C2859WX-FF US)

Part Nos.	Part Names	Order Nos.	Q'ty/unit
501	Exhaust Duct (SET)	SKJ71WE	1
502	Thermistor - Exhaust	ETHH002	1
503	Gasket - Exhaust Thermistor	ETHL004	1
505	Cover - CO2 Measurement Port	FABF036	1
506	Gasket - CO2 Measurement Port	FABL009	1
507	Condensate Drainage Plate	FABF035	1
508	Drain Cap	FABF056	1
511	Condensate Container (SET)	SKJ71WF	1
512	Drain Hose - SS HEX	FABF051	1
514	Freeze Prevention Heater - Condensate Container	ETHH004	1
516	Clamp - Condensate Hose NO.45	SAD6536	3
517	Mounting Plate - Circuit Board	FABA105	1
518	Cover - Exhaust Duct	FABL025	1
571	Screw - Medium Tapping M4X10 S410		
572	Screw - Long Tapping M4X12 S410		

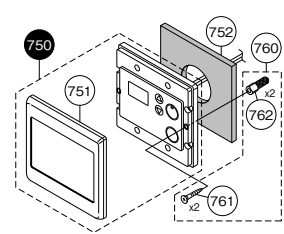
Electronic control unit and Remote controller  
EZ111DV(GQ-C3259WX-FF US)·EZ98DV(GQ-C2859WX-FF US)

Electronic control unit



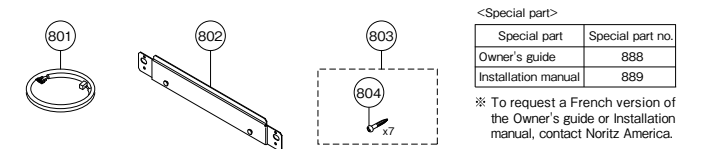
Remote controller

RC-7651M-ENG



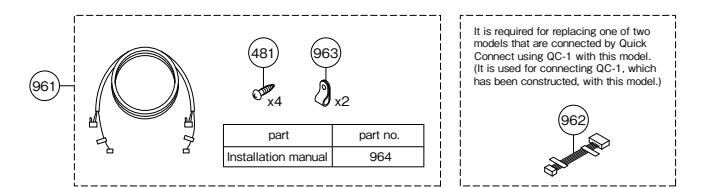
Attached set  
EZ111DV(GQ-C3259WX-FF US)·EZ98DV(GQ-C2859WX-FF US)

Attached set

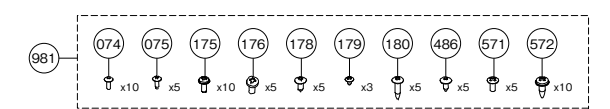


Optional

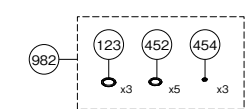
Quick-Connect Cable QC-2



Screw Kit for GQ-C32(28)59 Series



O-ring Kit for GQ-C32(28)59 Series



Electronic control unit, Remote controller and Attached set  
EZ111DV(GQ-C3259WX-FF US)·EZ98DV(GQ-C2859WX-FF US)

Part Nos.	Part Names	Order Nos.	Q'ty/unit
700	Circuit Board	SKJ709F	1
702	Power Supply Cord	ERLU001	1
703	Wiring Harness - GQ-C32(28)59WX-FF US	FABJ011	1
704	Wire Clamp - Nylon #4	7287909	1
750	Remote Controller - RC-7651M (SET)	QXJ017	1
751	Cover - Remote	QMEJ003	1
752	Mounting Packing - Remote	QHJA115	1
760	Screw Package - Remote(SET)	QQUA100	1
761	Screw - Round Head Wood M4.1X25 S305		
762	Dry Wall AnchorsX25		
800	Box - GQ-C32(28)59WX-FF US	SKJ71W0	1
801	Remote Cord - 6ft	ETHM001	1
802	Wall Mounting Plate	FABA103	1
803	Wood Screw Set#7	SAD2028	1
804	Screw - Round Head Wood 4.8X38 S305		
888	Owner's Guide - GQ-C32(28)59WX-FF US	SBB8019	1
889	Installation Manual - GQ-C32(28)59WX-FF US	SBB8018	1
961	Quick Connect Cord - QC-2	0706377	1
962	Adaptor - QC-1 to QC-2	SAG4672	1
963	Wire Clamp - Nylon #3	7223901	2
964	Installation Manual - QC-2	SAQ8992	1
981	Screw Kit for GQ-C32(28)59 Series	SKJ71YH	1
982	O-ring Kit for GQ-C32(28)59 Series	SKJ71YJ	1

Procedure for Flushing the Heat Exchanger

This procedure is only intended for use by a qualified service professional or authorized Noritz Service Representative. Any unauthorized use of this procedure may result in voiding the warranty. Please contact Noritz America (866-766-7489) for additional support.

If the alarm code "C1#" is flashing on the Remote Controller, it means there is Scale Build-up in the Heat Exchanger. To prevent damage to the Heat Exchanger from Scale Build-up, the Heat Exchanger needs to be flushed\*\* to remove the Scale Build-up. Damage to the water heater due to Scale Build-up is not covered by the water heater's warranty.

To clear the alarm code "C1#" the Heat Exchanger must be flushed. If the alarm code "C1#" is displayed and flashing on the Remote Controller, please contact Noritz America (866-766-7489).

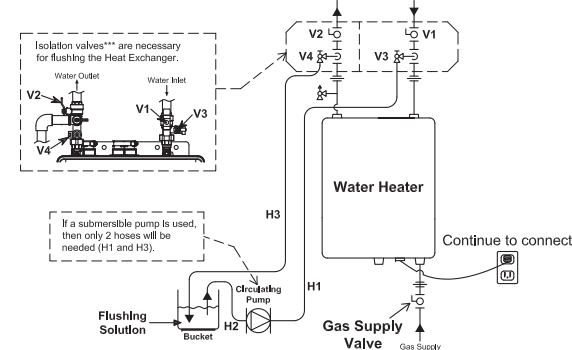
\* Warning Indication, # = 1-9  
\*\* Connect the blue connector marked "FLUSH" for flushing near the Circuit Board when flushing the Heat Exchanger.

The water heater must remain connected to electrical power when flushing the Heat Exchanger.

Basic Procedure

«Procedure 1. The preparation of the flushing system»

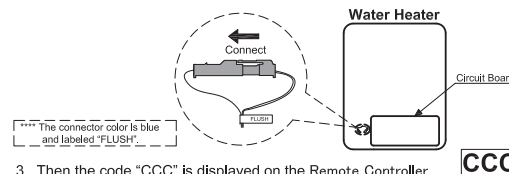
1. Close the gas supply valve.
2. Close the water inlet valve (V1) and the water outlet valve (V2).
3. Connect the one drain hose (H1) to the drain valve (V3), and then the other to the circulating pump.
4. Connect the drain hose (H2) to the circulating pump.
5. Connect the drain hose (H3) to the drain valve (V4).
6. Pour 1 gallon of "Calcium, Lime and Rust Removal Product" and 1 gallon water into the bucket. Noritz recommends "Calcium, Lime and Rust Removal Product" for flushing.
7. Place the both drain hoses (H2 and H3) into the bucket filled with the flushing solution.
8. Open the both drain valves (V3 and V4).



\*\*\* Isolation valves may be purchased as an accessory from an authorized Noritz wholesaler. They allow for full diagnostic testing and easy flushing of the system. Contact Noritz America for more information.(866-766-7489)

«Procedure 2. Flushing the Heat Exchanger - For Single Unit»

1. Open the Front Cover.
2. Connect the blue connector\*\*\*\* marked "FLUSH" for flushing near the Circuit Board.

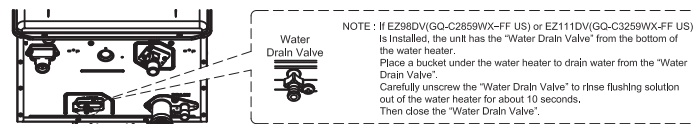


3. Then the code "CCC" is displayed on the Remote Controller.
4. Turn on the circulating pump to circulate the flushing solution through the water heater for 1 hour at a rate of 1.5 gallons per minute or more.
5. The code "C60" is displayed on the Remote Controller when the water heater detects the flow of the flushing solution. When 1 minute passes, the code "C60" will change to "C59" on the Remote Controller.
6. When 1 hour passes, the code "C00" is flashing on the Remote Controller. Do not disconnect the blue connector marked "FLUSH" for flushing.
7. Turn off the circulating pump.

«Procedure 3. Cleaning the Heat Exchanger»

The flushing solution needs to be rinsed and cleaned out of the water heater. Below is the way to rinse and clean the flushing solution.

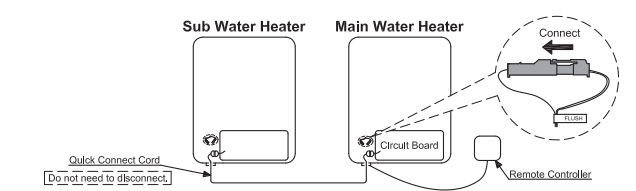
1. Remove both drain hoses (H2 and H3) from the bucket. And then place the drain hose (H3) into the sink or outside to drain.
2. Close the drain valve (V3) and then open the water inlet valve (V1). Do not open the fresh water outlet valve (V2).
3. Clean the water heater with fresh water for 3 minutes or more. (Needs to have enough time to clean the water heater.)



4. Close the drain valve (V4) and then remove the drain hose (H3) from the drain valve (V4).
5. Remove the drain hose (H1) from the drain valve (V3).
6. Disconnect the blue connector marked "FLUSH" for flushing. The code "C00" goes out on the Remote Controller.
7. Close the Front Cover.
8. Open the gas supply valve and water outlet valve (V2).
9. Check for correct operation of the water heater.

In case of the "Quick Connect Multi System Procedure"

1. Connect the blue connector marked "FLUSH" for unit needing to be flushed. (The water heater is isolated from Quick Connect Multi System when the blue connector marked "FLUSH" for flushing is connected. Not need to disconnect the Quick Connect Cord.)



2. Then the code "CCC" or "FCC" is displayed on the Remote Controller.

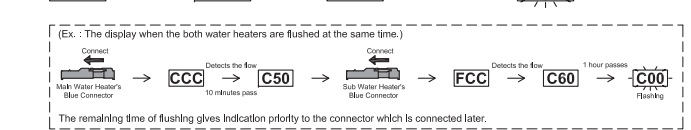
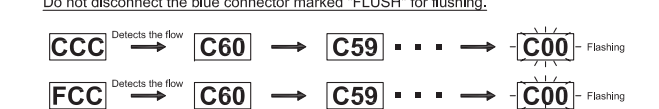
CCC is displayed when the Main Water Heater's blue connector is connected.

FCC is displayed when the Sub Water Heater's blue connector is connected.

3. Turn on the circulating pump to circulate the flushing solution through the water heaters for 1 hour at a rate of 1.5 gallons per minute or more.

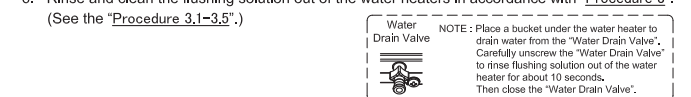
4. When 1 hour passes, the code "C00" is flashing on the Remote Controller.

Do not disconnect the blue connector marked "FLUSH" for flushing.



The remaining time of flushing gives indication priority to the connector which is connected later.

5. Turn off the circulation pump.
6. Rinse and clean the flushing solution out of the water heaters in accordance with "Procedure 3". (See the "Procedure 3.1-3.5".)



7. Disconnect the "blue connector for flushing". The Code "C00" goes out on the Remote Controller.
8. Close the Front Covers.
9. Open the gas supply valves and water outlet valves.
10. Check for correct operation of the water heaters.

Please contact Noritz America if more information is needed for flushing. (Phone #: 866-766-7489)