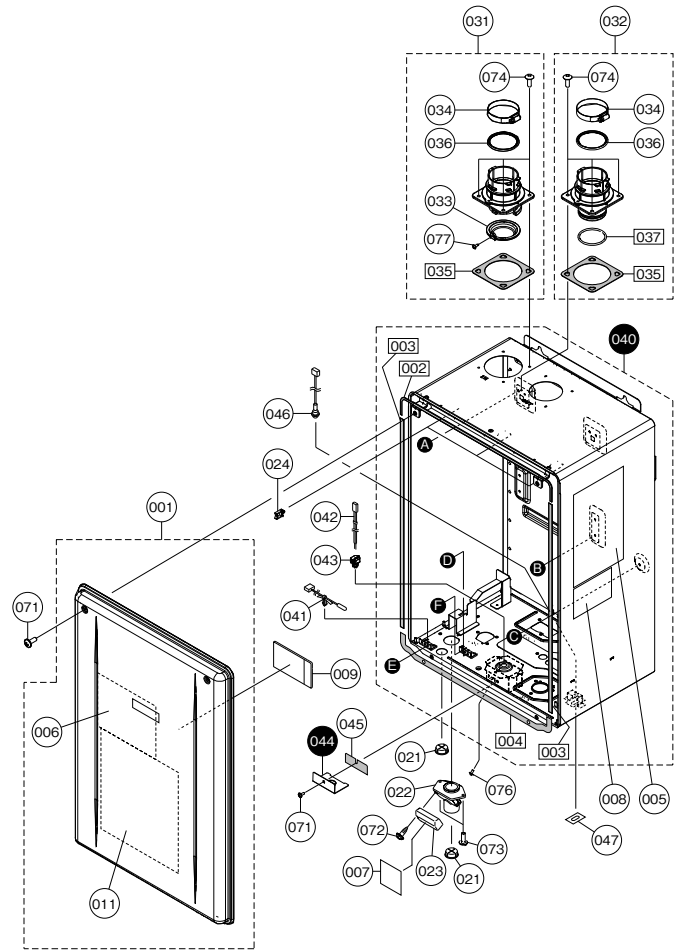


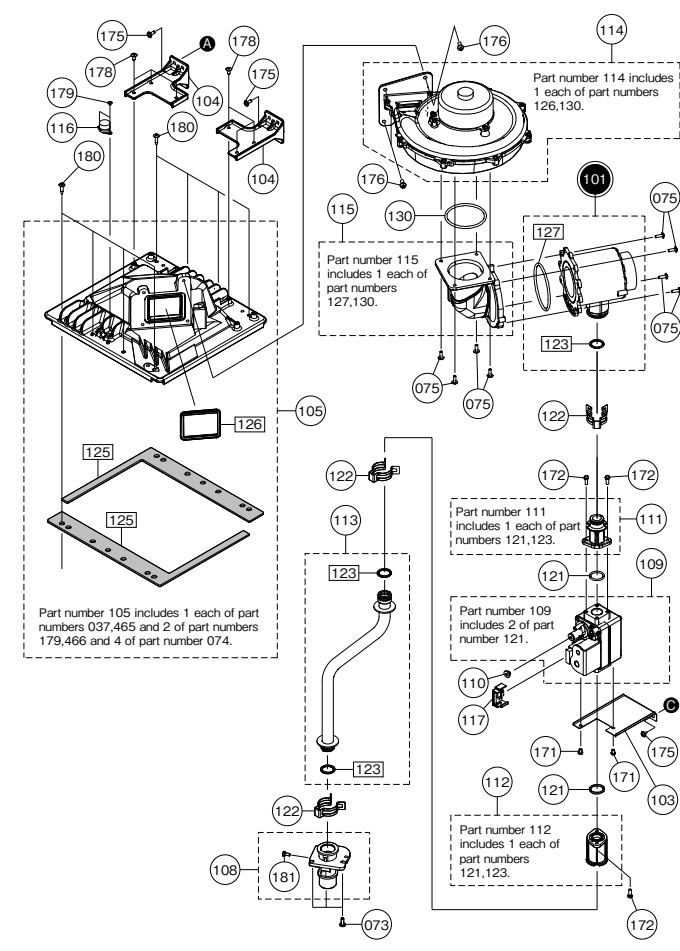
External outfitting NCC199CDV(GQ-C3259WZ-FF US)



External outfitting NCC199CDV(GQ-C3259WZ-FF US)

Part Nos	Part Names	Order Nos.	Q'ty/unit
001	Front Cover - GQ-C2859WZ-FF US / GQ-C3259WZ(Z)-FF US	SKJ71UW	1
002	Gasket - Front Cover Top	FABL011	1
003	Gasket - Front Cover Sides	CVAL004	2
004	Gasket - Front Cover Top and Bottom	AAPL015	1
005	Label - Outside Front Cover Caution Label	ELVK003	1
006	Label - Inside Front Cover Caution Label	ELVK006	1
007	Label - Remote Terminal Caution Label	ENJK002	1
008	Label - Name Plate DV/OD	FABK010	1
009	Parts List/Technical sheet	FAOK051	1
010	Wiring Diagram	FABK002	1
021	Wire Grommet - Rubber	CKPAG26	2
022	External Remote Terminal Block	DNSA026	1
023	Cover - External Remote Terminal Block	DNSA025	1
024	Wire Clamp	7559402	3
031	Intake Flue w/ O-Ring and Gasket (SET)	SKJ71W1	1
032	Exhaust Flue w/ O-Ring and Gasket (SET)	SKJ71W2	1
033	Filter - Intake Air	FABF101	1
034	Clamp - Exhaust Pipe	FABF108	2
035	Gasket - Exhaust Flue	FABL101	2
036	O-Ring - Exhaust Pipe	FABL102	2
037	O-Ring - Exhaust Flue	FABL103	1
040	Case - GQ-C3259WZ-FF US	SKJ71X1	1
041	Thermistor - Air	BWCH003	1
042	Inlet Power Wires	ENJ020	1
043	Inlet Power Wire Clip	ETPA073	1
044	Junction Box Cover	ENJA025	1
045	Gasket - Junction Box Cover	ENWL005	1
046	LED Light	CRP3014	1
047	Sign Glass Window	ENKK002	1
071	Screw - Front Cover with washer M4X12 S410		
072	Screw - Remote Terminal Cover M4X12 S410		
073	Screw - Long Machine M4X12 S410		
074	Screw - Pre-Coated Machined M4X12 S410		
075	Screw - Long Mounting Machine M4X12 S430		
076	Screw - Remote Terminal M4X8 S430		
077	Screw - Remote Terminal M4X10 S430		

Combustion unit and gas route NCC199CDV(GQ-C3259WZ-FF US)

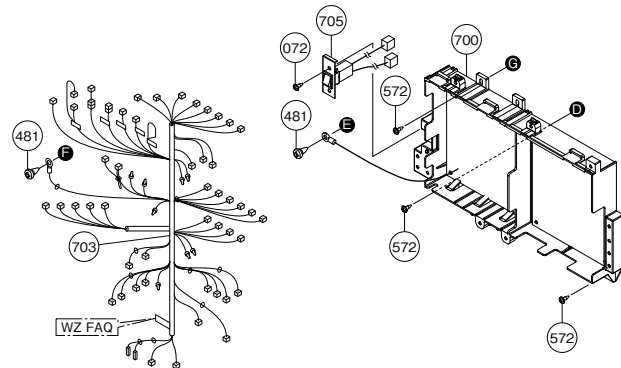


Condensate feed route NCC199CDV(GQ-C3259WZ-FF US)

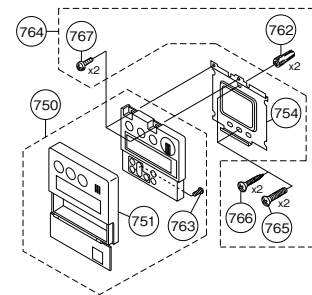
Part Nos.	Part Names	Order Nos.	Q'ty/unit
501	Exhaust Duct (SET)	SKJ71WE	1
502	Thermistor - Exhaust	ETHH002	1
503	Gasket - Exhaust Thermistor	ETHL004	1
505	Cover - CO2 Measurement Port	FABF036	1
506	Gasket - CO2 Measurement Port	FABLO09	1
507	Condensate Drainage Plate	FABF035	1
508	Drain Cap	FABF056	1
511	Condensate Container (SET)	SKJ71WF	1
512	Drain Hose - SS HEX	FABF051	1
514	Freeze Prevention Heater - Condensate Container	ETHH004	1
516	Clamp - Condensate Hose NO.45	SAD0536	3
517	Mounting Plate - Circuit Board	FABR105	1
518	Cover - Exhaust Duct	FABLO25	1
571	Screw - Medium Tapping M4X10 S410		
572	Screw - Long Tapping M4X12 S410		

Electronic control unit and Remote controller NCC199CDV(GQ-C3259WZ-FF US)

Electronic control unit

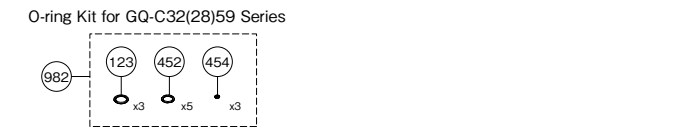
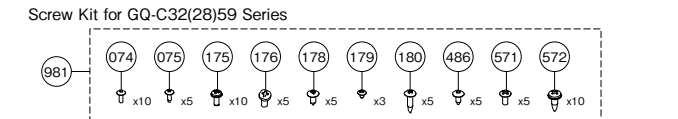
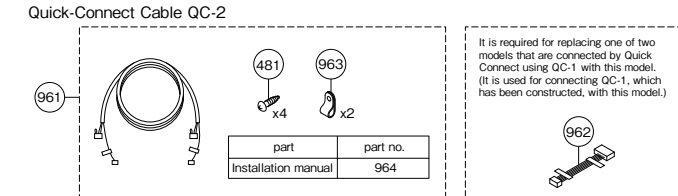
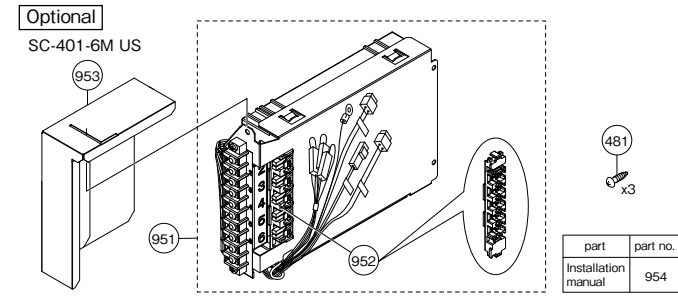
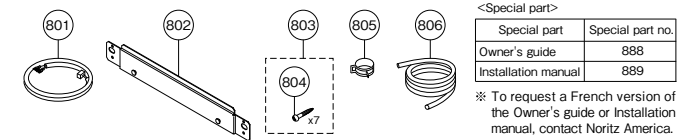


Remote controller RC-9018M US



Attached set NCC199CDV(GQ-C3259WZ-FF US)

Attached set



Electronic control unit, Remote controller and Attached set NCC199CDV(GQ-C3259WZ-FF US)

Part Nos.	Part Names	Order Nos.	Q'ty/unit
700	Circuit Board	SHC70YF	1
703	Wiring Harness - GQ-C3259WZ-FF US	FAQJ011	1
705	Rock Switch	FAQJ030	1
750	Remote Controller - RC-9018M (SET)	ONQJ015	1
751	Cover - Remote RC-9018M	ONQA020	1
754	Mounting Plate - Remote RC-9018M	QNA021	1
762	Dry Wall Anchors#X25		
763	Screw - Round Head Machine M3X6 S430		
764	Screw Package - RC 9018M (SET)		
765	Screw - Flat Head Machine M4X35		
766	Screw - Flat Head Tapping 4X20		
767	Screw - Round Head Machine M3X6		
800	Box - GQ-C3259WZ-FF US	SKJ71WM	1
801	Remote Cord - 6ft	ETHM001	1
802	Wall Mounting Plate	FABA103	1
803	Wood Screw Set7	SAD2028	1
804	Screw - Round Head Wood 4.8X38 S305		
805	Clamp - Drain Hose (External)	1230701	1
806	Hose - Drain (External)	AHED061	1
888	Owner's Guide - GQ-C3259WZ-FF US	SBB80TA	1
889	Installation Manual - GQ-C3259WZ-FF US	SBB80TC	1
951	System Controller - SC-401-6M	SHC70Z1	1
952	Terminal Block - System Controller	ENLU106	1
953	Cover - System Controller	ENLU115	1
954	Installation Manual - SC-401-6M	SBB80UW	1
961	Quick Connect Cord - QC-2	0706377	1
962	Adaptor - QC-1 to QC-2	SAG4672	1
963	Wire Clamp - Nylon #3	7223901	2
964	Installation Manual - QC-2	SA08992	1
981	Screw Kit for GQ-C32(28)59 Series	SKJ71YH	1
982	O-ring Kit for GQ-C32(28)59 Series	SKJ71YJ	1

Procedure for Flushing the Heat Exchanger

This procedure is only intended for use by a qualified service professional or authorized Noritz Representative. Any unauthorized use of this procedure may result in voiding the warranty. Please contact Noritz America (866-766-7489) for additional support.

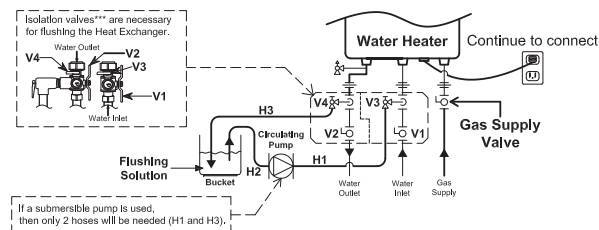
If the alarm code "C1#" is flashing on the Remote Controller, it means there is Scale Build-up in the Heat Exchanger. To prevent damage to the Heat Exchanger from Scale Build-up, the Heat Exchanger needs to be flushed** to remove the Scale Build-up. Damage to the water heater due to Scale Build-up is not covered by the water heater's warranty. To clear the alarm code "C1#" the Heat Exchanger must be flushed. If the alarm code "C1#" is displayed and flashing on the Remote Controller, please contact Noritz America (866-766-7489).
* Warning Indication, # = 1-9
** Connect the blue connector marked "FLUSH" for flushing near the Circuit Board when flushing the Heat Exchanger.

The water heater must remain connected to electrical power when flushing the Heat Exchanger.

Basic Procedure

«Procedure 1. The preparation of the flushing system»

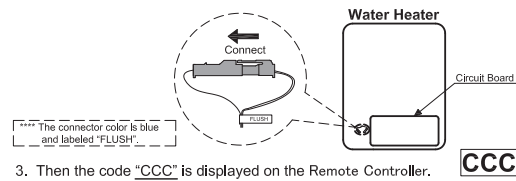
1. Close the gas supply valve.
2. Close the water inlet valve (V1) and the water outlet valve (V2).
3. Connect the one drain hose (H1) to the drain valve (V3), and then the other to the circulating pump.
4. Connect the drain hose (H2) to the circulating pump.
5. Connect the drain hose (H3) to the drain valve (V4).
6. Pour 1 gallon of "Calcium, Lime and Rust Removal Product" and 1 gallon water into the bucket. Noritz recommends "Calcium, Lime and Rust Removal Product" for flushing.
7. Place the both drain hoses (H2 and H3) into the bucket filled with the flushing solution.
8. Open the both drain valves (V3 and V4).



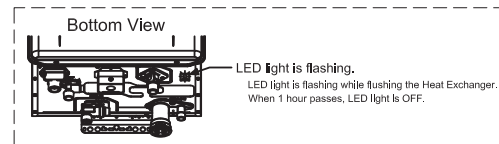
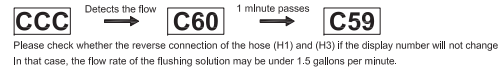
*** Isolation valves may be purchased as an accessory from an authorized Noritz wholesaler. They allow for full diagnostic testing and easy flushing of the system. Contact Noritz America for more information. (866-766-7489)

«Procedure 2. Flushing the Heat Exchanger - For Single Unit»

1. Open the Front Cover.
2. Connect the blue connector**** marked "FLUSH" for flushing near the Circuit Board.



3. Then the code "CCC" is displayed on the Remote Controller.
4. Turn on the circulating pump to circulate the flushing solution through the water heater for 1 hour at a rate of 1.5 gallons per minute or more.
5. The code "C60" is displayed on the Remote Controller when the water heater detects the flow of the flushing solution. When 1 minute passes, the code "C60" will change to "C59" on the Remote Controller.



6. When 1 hour passes, the code "C00" is flashing on the Remote Controller. Do not disconnect the blue connector marked "FLUSH" for flushing.
7. Turn off the circulating pump.

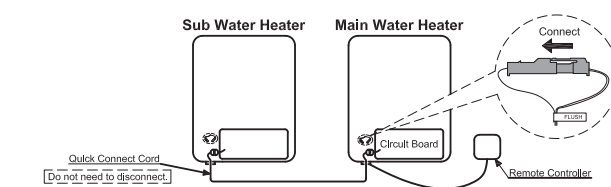
«Procedure 3. Cleaning the Heat Exchanger»

The flushing solution needs to be rinsed and cleaned out of the water heater. Below is the way to rinse and clean the flushing solution.

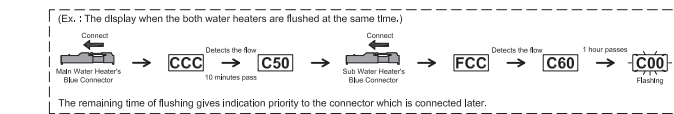
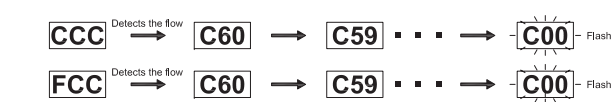
1. Remove both drain hoses (H2 and H3) from the bucket. And then place the drain hose (H3) into the sink or outside to drain.
2. Close the drain valve (V3) and then open the water inlet valve (V1). Do not open the fresh water outlet valve (V2).
3. Clean the water heater with fresh water for 3 minutes or more. (Needs to have enough time to clean the water heater.)
4. Close the drain valve (V4) and then remove the drain hose (H3) from the drain valve (V4).
5. Remove the drain hose (H1) from the drain valve (V3).
6. Disconnect the blue connector marked "FLUSH" for flushing. The code "C00" goes out on the Remote Controller.
7. Close the Front Cover.
8. Open the gas supply valve and water outlet valve (V2).
9. Check for correct operation of the water heater.

In case of the "Quick Connect Multi System Procedure"

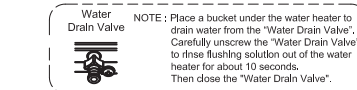
1. Connect the blue connector marked "FLUSH" for unit needing to be flushed. (The water heater is isolated from Quick Connect Multi System when the blue connector marked "FLUSH" for flushing is connected. Not need to disconnect the Quick Connect Cord.)



2. Then the code "CCC" or "FCC" is displayed on the Remote Controller. CCC is displayed when the Main Water Heater's blue connector is connected. FCC is displayed when the Sub Water Heater's blue connector is connected.
3. Turn on the circulating pump to circulate the flushing solution through the water heaters for 1 hour at a rate of 1.5 gallons per minute or more. (LED light is flashing while flushing the Heat Exchanger. See the "Procedure 2.5".)
4. When 1 hour passes, the code "C00" is flashing on the Remote Controller. Do not disconnect the blue connector marked "FLUSH" for flushing.



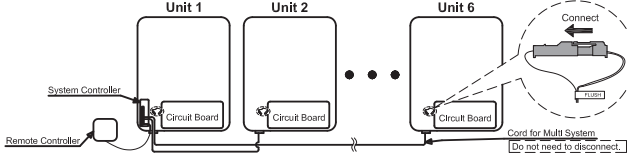
5. Turn off the circulation pump.
6. Rinse and clean the flushing solution out of the water heaters in accordance with "Procedure 3". (See the "Procedure 3.1-3.5".)



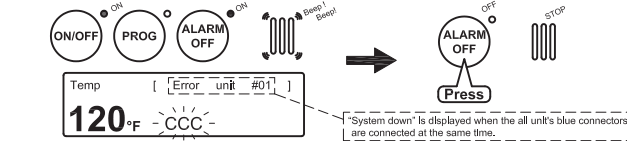
7. Disconnect the "blue connector for flushing". The Code "C00" goes out on the Remote Controller.
8. Close the Front Covers.
9. Open the gas supply valves and water outlet valves.
10. Check for correct operation of the water heaters.

In case of the "Multi System Procedure"

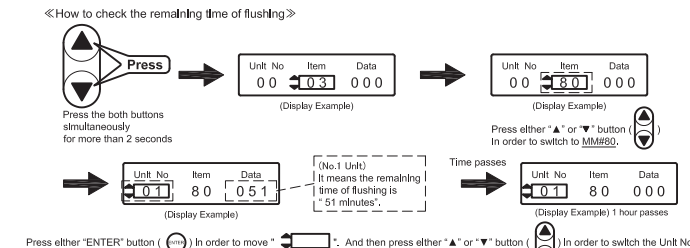
1. Connect the blue connector marked "FLUSH" for unit needing to be flushed. (The water heater is isolated from Multi System when the blue connector marked "FLUSH" for flushing is connected. Not need to disconnect the "Cord for the Multi System".)



2. Then the code "CCC" is displayed on the Remote Controller and the error alarm continuously sounds. Press the "ALARM OFF" button to stop the error alarm.



3. Turn on the circulating pump to circulate the flushing solution through the water heaters for 1 hour at a rate of 1.5 gallons per minute or more. Note: The code "CCC" does not change when Multi System mode. The display does not show the remaining time of flushing.
4. Check for the remaining time of flushing to see the Maintenance Monitor #80 (MM #80).



5. When 1 hour passes, turn off the circulation pump. (LED light is flashing while flushing the Heat Exchanger. See the "Procedure 2.5".)
6. Rinse and clean the flushing solution out of the water heaters in accordance with "Procedure 3". (See the Procedure 3.1-3.5.)
7. Disconnect the blue connector marked "FLUSH" for flushing. The Code "CCC" goes out on the Remote Controller.
8. Close the Front Covers.
9. Open the gas supply valves and water outlet valves.
10. Check for correct operation of the water heaters.

Please contact Noritz America if more information is needed for flushing. (Phone #: 866-766-7489)